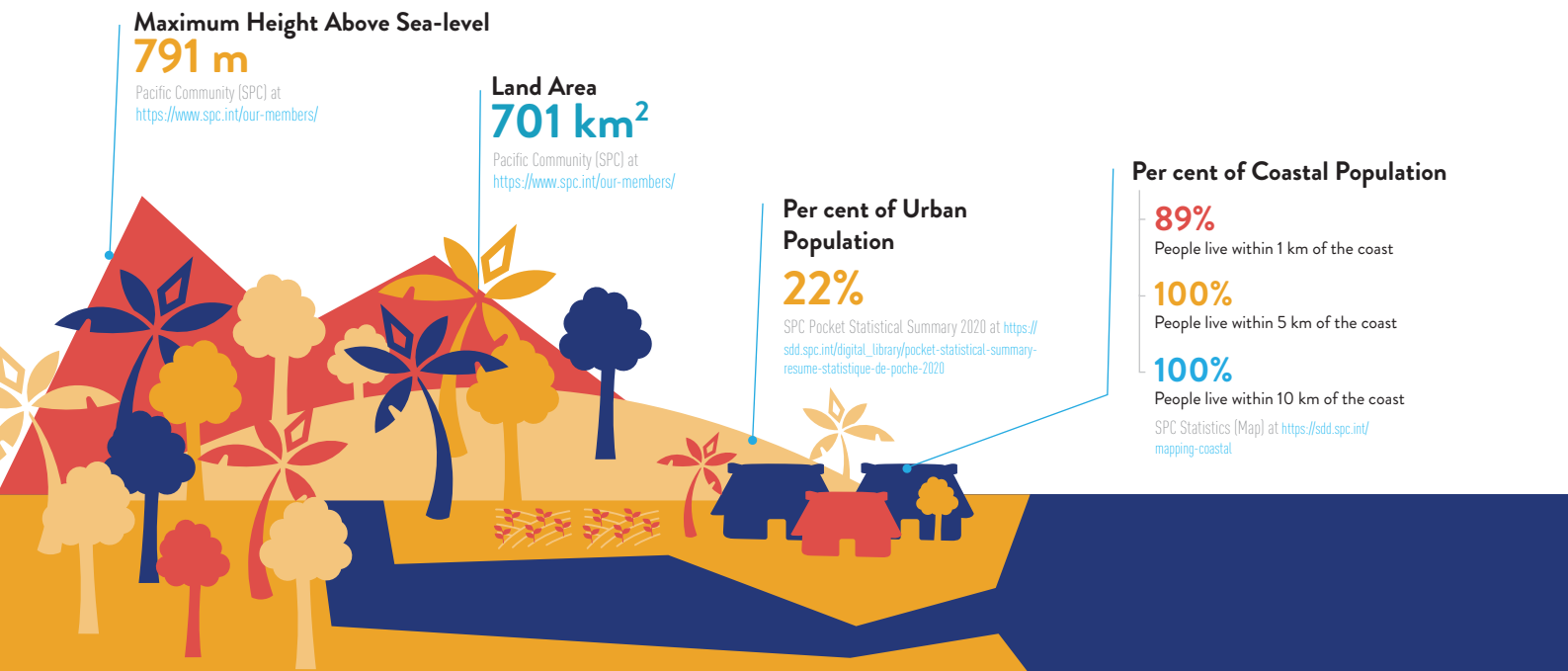


# PACIFIC RISK PROFILE FEDERATED STATES OF MICRONESIA

## Basic Country Statistics



**Total Population**  
(2020 Estimate)

**105,504**  
persons



**Total Male & Female Population**  
(2020 Estimate)

**Male**  
**53,973**  
persons or 51.16%

**Female**  
**51,531**  
persons or 48.84%

SPC Statistics (Population) at <https://sdd.spc.int/topic/population>

**Gross Domestic Product (GDP) per Capita**

**US\$3,830**  
(2018)

SPC Pocket Statistical Summary 2020 at [https://sdd.spc.int/digital\\_library/pocket-statistical-summary-resume-statistique-de-poche-2020](https://sdd.spc.int/digital_library/pocket-statistical-summary-resume-statistique-de-poche-2020)



**Population Density**  
**150** persons/km<sup>2</sup>

SPC Pocket Statistical Summary 2020 at [https://sdd.spc.int/digital\\_library/pocket-statistical-summary-resume-statistique-de-poche-2020](https://sdd.spc.int/digital_library/pocket-statistical-summary-resume-statistique-de-poche-2020)



**Disability Prevalence**  
**11%**

UNESCAP (2019) Disability at a Glance at <https://www.unescap.org/publications/disability-glance-2019>

**Women's Labour Force Participation Rate**

**48%**

**Women's Share of Wage Employment in the Non-agriculture Sector**

**37.9%**

**Ever-Partnered Women Experienced Violence by Intimate Partner**

**33%**

ADB (2016) Gender Statistics for the Pacific and Timor-Leste at <https://www.adb.org/publications/gender-statistics-pacific-and-timor-leste>

Pacific Risk Profile is a snapshot of climate and disaster risk information that is collected from credible open data sources. It is intended to provide DFAT program managers and implementing partners with easy access to essential risk information. When employing risk information in specific program contexts, however, it is strongly encouraged to study the original risk information sources or even undertake proper risk assessments.

For more information or other technical support, you may contact the Australia Pacific Climate Partnership Support Unit at [helpdesk@apclimatepartnership.com.au](mailto:helpdesk@apclimatepartnership.com.au).

Published in July 2021

## Hazard Likelihood



**Earthquake**  
Low Likelihood



**Landslide**  
Low Likelihood



**Wildfire**  
Very low Likelihood



**Typhoon**  
High Likelihood



**Coastal Flood**  
Medium Likelihood



**Tsunami**  
Medium Likelihood

### Legend

	Very low		Medium
	Low		High

ThinkHazard! at <https://thinkhazard.org/en/report/163-federated-states-of-micronesia>

## Major Disasters 2011-2020



Total Population  
Affected  
**145,000**  
persons

Total Damage

**US\$11 million**



Number of Major  
Typhoons in 2011-2020  
**2**

EM-DAT Database (February 2021)  
at <https://www.emdat.be/>

Per cent of Disaster Type

(Major Disasters 2011-2020)



**67%**  
Storm



**33%**  
Drought

EM-DAT Database (February 2021)  
at <https://www.emdat.be/>

## Economic Loss Due to Disasters

Total Average Annual Losses (AAL)

**US\$29.15 million**

UNESCAP (2020) The Disaster Riskscape across the Pacific Small  
Island Developing States at <https://www.unescap.org/sites/default/files/100-APDR-Subreport-Pacific-SIDS.pdf>

AAL as a Percentage of GDP

**9.65%**

UNESCAP (2020) The Disaster Riskscape across the  
Pacific Small Island Developing States

## Adaptation Costs for Coastal Protection

**US\$8~28 million per year**

or 1~3% of projected GDP in 2040

World Bank (2017) Climate Change and Disaster Management (Pacific Possible Background  
Paper No.6) at <https://openknowledge.worldbank.org/handle/10986/28137>

# Risk Index

## World Risk index

### Micronesia is ranked

**73rd** among the countries with the high disaster risk.

- Exposure - High
- Vulnerability - High
- Susceptibility - High
- Lack of Coping Capacities - Medium
- Lack of Adaptive Capacities - High

World Risk Report 2020 at <https://reliefweb.int/sites/reliefweb.int/files/resources/WorldRiskReport-2020.pdf>

## Climate Risk Index for 1999-2018

Between 1999 and 2018, **Micronesia** was the **46th** country most affected by extreme weather events .

Global Climate Risk Index 2020 at <https://www.germanwatch.org/en/17307>

## INFORM Covid-19 Risk



Micronesia's risk level is high when assessing the potential humanitarian impacts of Covid-19 in combination with other pre-existing crisis risks.

INFORM Covid-19 Warning (beta version) at <https://drmkc.jrc.ec.europa.eu/inform-index/INFORM-Covid-19/INFORM-Covid-19-Warning-beta-version>

# Climate Projection

## Typhoon



Typhoons are projected to be less frequent but more intense.

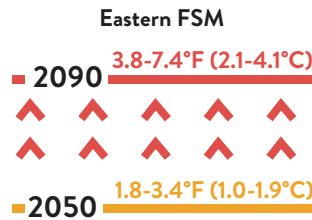
## Rainfall



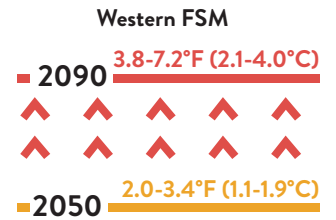
Average annual rainfall is projected to increase, with more extreme rain events.

## Temperature

Annual mean temperatures and extremely high daily temperatures will continue to rise.



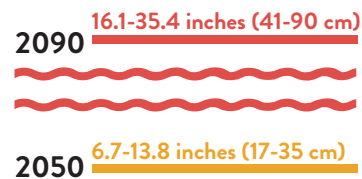
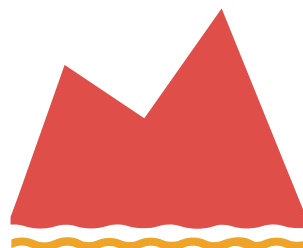
Very High Emissions Scenario



Very High Emissions Scenario

## Sea-level Rise

Sea level is expected to continue to rise.



Very High Emissions Scenario

## Climate Projection (Continued)

---

### Ocean Acidification



Ocean acidification is expected to continue.

### Coral Bleaching Risk



The risk of coral bleaching is expected to increase.

### El Niño / La Niña



In Pohnpei, **El Niño** tends to result in drier conditions during the dry season, but higher than average rainfall during the **wet season**.

**La Niña** tends to bring above average rainfall in the **dry season**.